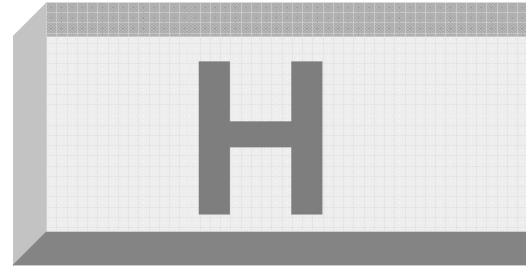




AMERICAN
BROACH & MACHINE CO.



Horizontal Broaching Machine

No Pit – No Operator Stand = Floor Level Operation



Model H10-36 w/Full Automation



Model H25-72



Model H35-100

Broaching Solutions Since 1919



The President's "E" Award
For Excellence In Exporting

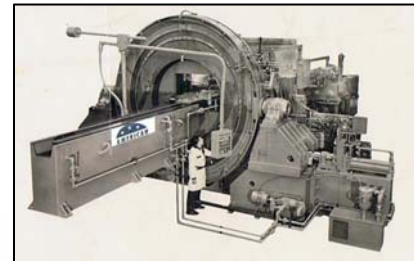


Any Size, 5 - 150 Ton, 24 - 480 Inch Stroke
Manual load, or fully automated with the latest technology.

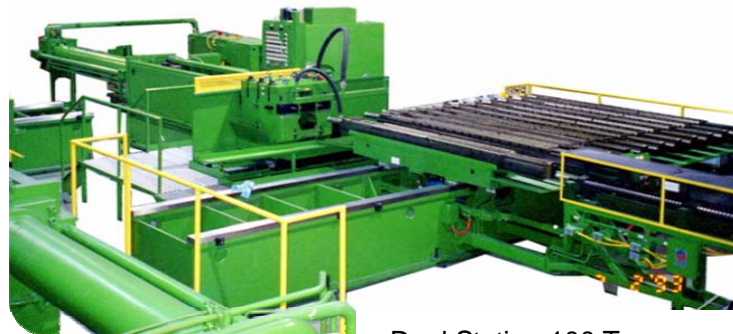


Rigid Machine Construction – Best Engineering Innovations in the Industry

Broaching parts to close tolerances and with excellent surface finish can be accomplished only with a very rigid machine. The American design has a heavy duty single piece frame resulting in a very strong machine. The large hardened and ground guide ways, laser aligned, hand scraped way beds, provide long life and a smooth, dependable broaching operation, with world class accuracy.



Manual or Automatic Tool Handling



Dual Station 100 Tons
w/Full Auto-Load System

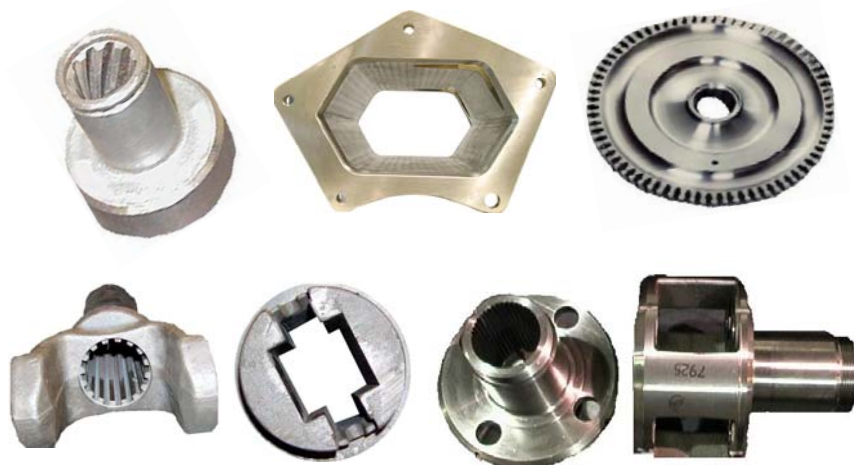
Special Machines Designed to Any Application

Engineered Weldment & Solid Cast Iron Components

Durable for Decades
Today's Technology
Legendary Historic Quality



Straight, Involute & Helical Splines, Keyways, Hex, Precision Bearing Cages, & Special Custom Shapes, for 1000's of Parts, from Barrel Rifling to Turbine Engine Disk Slots



AMERICAN
BROACH & MACHINE CO.

575 South Mansfield Street
Ypsilanti, Michigan, 48197 USA

Ph # (734) 961-0300

www.americanbroach.com

Engineered Quality Guaranteed for Over 90 Years

- Broaching Machines
- Broach Cutting Tools
- Broach Tooling & Fixtures
- Startup & Runoff Production Broaching Services
- World Famous CNC Broach Grinding / Sharpening Machines