



AMERICAN
BROACH & MACHINE CO.

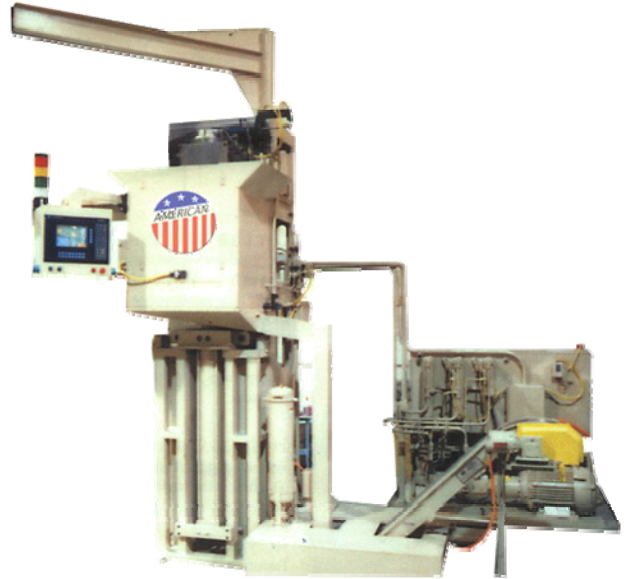
POT

Push Up Pot Broaching Machine

Customized to Any Application – External Splines – Special Forms



Model POT25-42



Model POT25 - 36

Broaching Solutions Since 1919



The President's "E" Award
For Excellence In Exporting



Any Size, From 5 - 50 Ton, 24 - 60 Inch Stroke
Manual load, or fully automated with the latest technology.

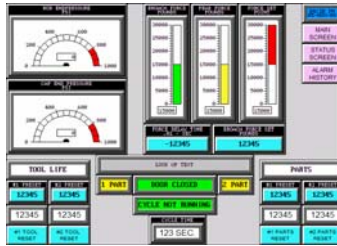


Rigid Machine Construction – Longest Box Way Engagement in the Industry

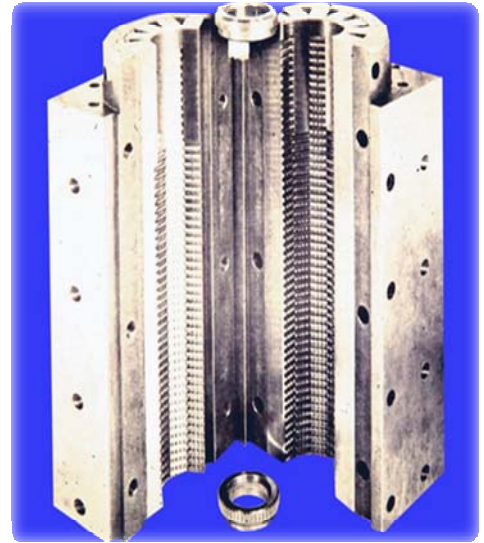
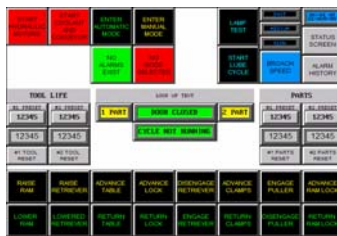
Broaching parts to close tolerances, with excellent surface finishes can be accomplished only with a very well designed machine. The American Broach, Push Up Pot Broaching Machine, has a rigid time tested design that includes an internal flush, gravity assist, chip evacuation system. Our exclusive process monitoring system tells the operator when the cutting tools are dull to prevent scrap or tool damage. Full automation is available.



High Performance Hydraulics



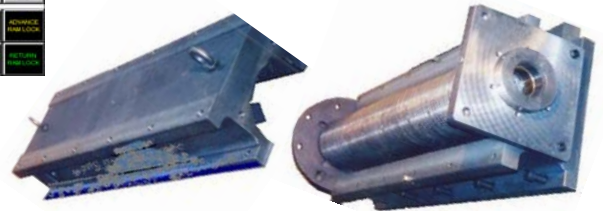
PLC Process Monitoring



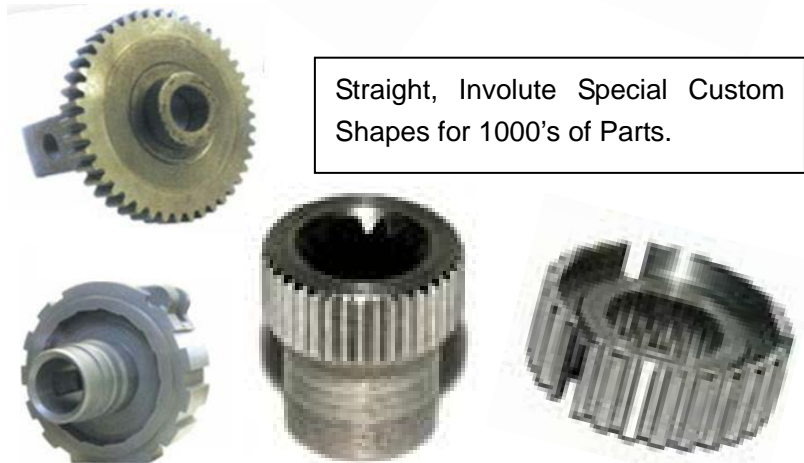
Pot Tooling Assembly Detail

Engineered Weldment & Solid Cast Iron Components

Durable for Decades
Today's Technology
Legendary Historic Quality



Straight, Involute Special Custom Shapes for 1000's of Parts.



AMERICAN
BROACH & MACHINE CO.

575 South Mansfield Street
Ypsilanti, Michigan, 48197 USA
Ph # (734) 961-0300

www.americanbroach.com

Engineered Quality Guaranteed for Over 90 Years

- Broaching Machines
- Broach Cutting Tools
- Broach Tooling & Fixtures
- Startup & Runoff Production Broaching Services
- World Famous CNC Broach Grinding / Sharpening Machines