



**AMERICAN**  
BROACH & MACHINE CO.



# Vertical Pull Down Broaching Machine

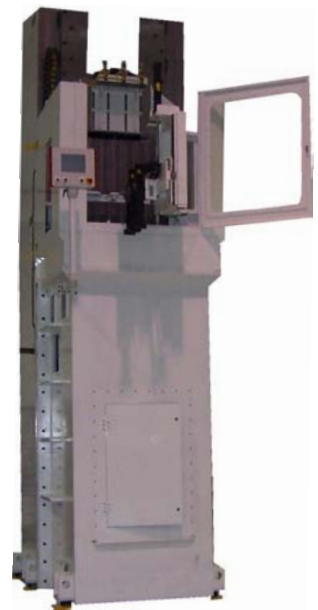
Customized to Any Application – Narrow to Wide – One to Six Stations



Model VPD 35-72



Model VPD15-48



Model VPD 50-100

***Broaching Solutions Since 1919***



The President's "E" Award  
For Excellence In Exporting



**Any Size, From 5 - 150 Ton, 24 - 120 Inch Stroke**  
Manual load, or fully automated with the latest technology.

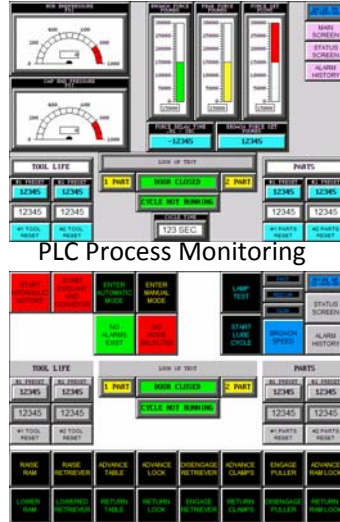


## Rigid Machine Construction – Longest Box Way Engagement in the Industry

Broaching parts to close tolerances and with excellent surface finish can be accomplished only with a very rigid machine. The American design has a heavy duty single piece column and a knee that extends to the floor resulting in a very strong machine. The large hardened and ground guide ways, and laser aligned, hand scraped way beds, provide long life and a smoother broaching operation with world class accuracy.



Single or Multi-Station Lifting Tables



PLC Process Monitoring



VPD 25 Ton 72 Inch Stroke

Engineered Weldment & Solid Cast Iron Components



Durable for Decades  
Today's Technology  
Legendary Historic Quality

American Offers both **Hydraulic and Electro-Mechanical Systems** to Power the Machines for Variety of Applications.

Straight, Involute or Helical Splines, Keyways, and Special Custom Shapes for 1000's of Parts.



575 South Mansfield Street  
Ypsilanti, Michigan, 48197 USA  
Ph # (734) 961-0300

[www.americanbroach.com](http://www.americanbroach.com)

### Engineered Quality Guaranteed for Over 90 Years

- Broaching Machines
- Broach Cutting Tools
- Broach Tooling & Fixtures
- Startup & Runoff Production Broaching Services
- World Famous CNC Broach Grinding / Sharpening Machines