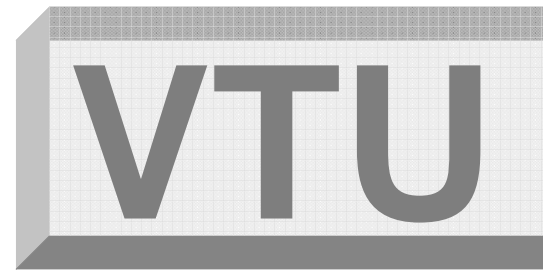




AMERICAN
BROACH & MACHINE CO.



Vertical Table-Up Broaching Machine

No Pit – No Operator Stand = Floor Level Operation



VTU 15-48 W/Automation



VTU 15-36



VTU 35-72 W/Automation

Broaching Solutions Since 1919



The President's "E" Award
For Excellence In Exporting



Any Size, From 5 - 50 Ton, 24 - 120 Inch Stroke
Manual load, or fully automated with the latest technology.

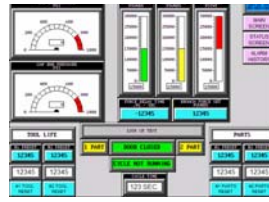


Rigid Machine Construction – Longest Box Way Engagement in the Industry

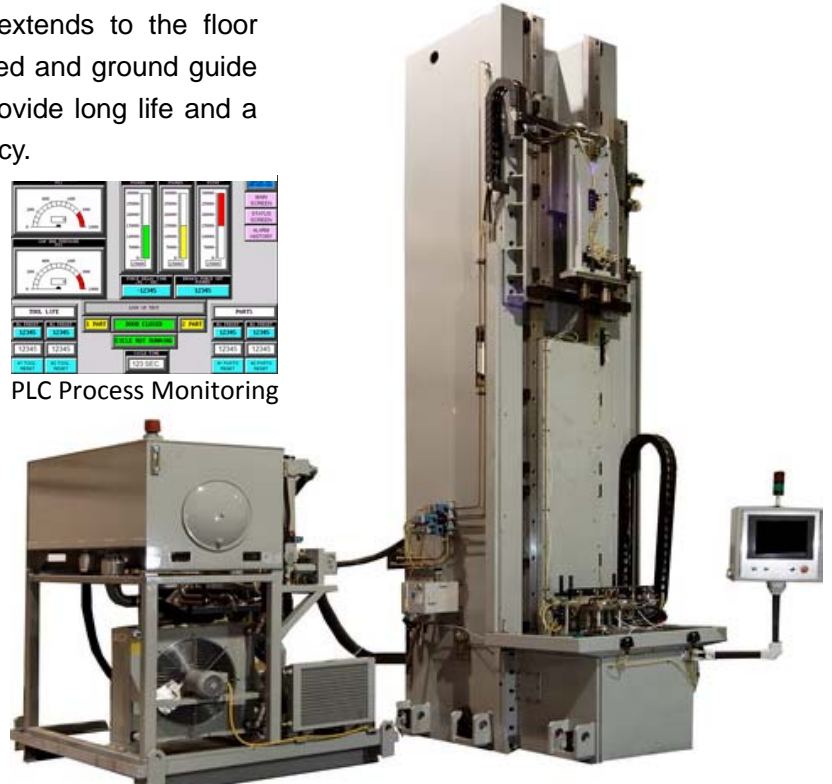
Broaching parts to close tolerances and with excellent surface finish can be accomplished only with a very rigid machine. The American design has a heavy duty single piece column and a knee that extends to the floor resulting in a very strong machine. The large hardened and ground guide ways, and laser aligned, hand scraped way beds, provide long life and a smoother broaching operation with world class accuracy.



Single or Multi-Station Lifting Tables



PLC Process Monitoring



American Offers both **Hydraulic and Electro-Mechanical Systems** to Power the Machines for Variety of Applications.

Engineered Weldment & Solid Cast Iron Components

Durable for Decades

Today's Technology

Legendary Historic Quality



Straight, Involute or Helical Splines, Keyways, and Special Custom Shapes for 1000's of Parts.



AMERICAN
BROACH & MACHINE CO.

575 South Mansfield Street
Ypsilanti, Michigan, 48197 USA
Ph # (734) 961-0300

www.americanbroach.com

Engineered Quality Guaranteed for Over 90 Years

- Broaching Machines
- Broach Cutting Tools
- Broach Tooling & Fixtures
- Startup & Runoff Production Broaching Services
- World Famous CNC Broach Grinding / Sharpening Machines